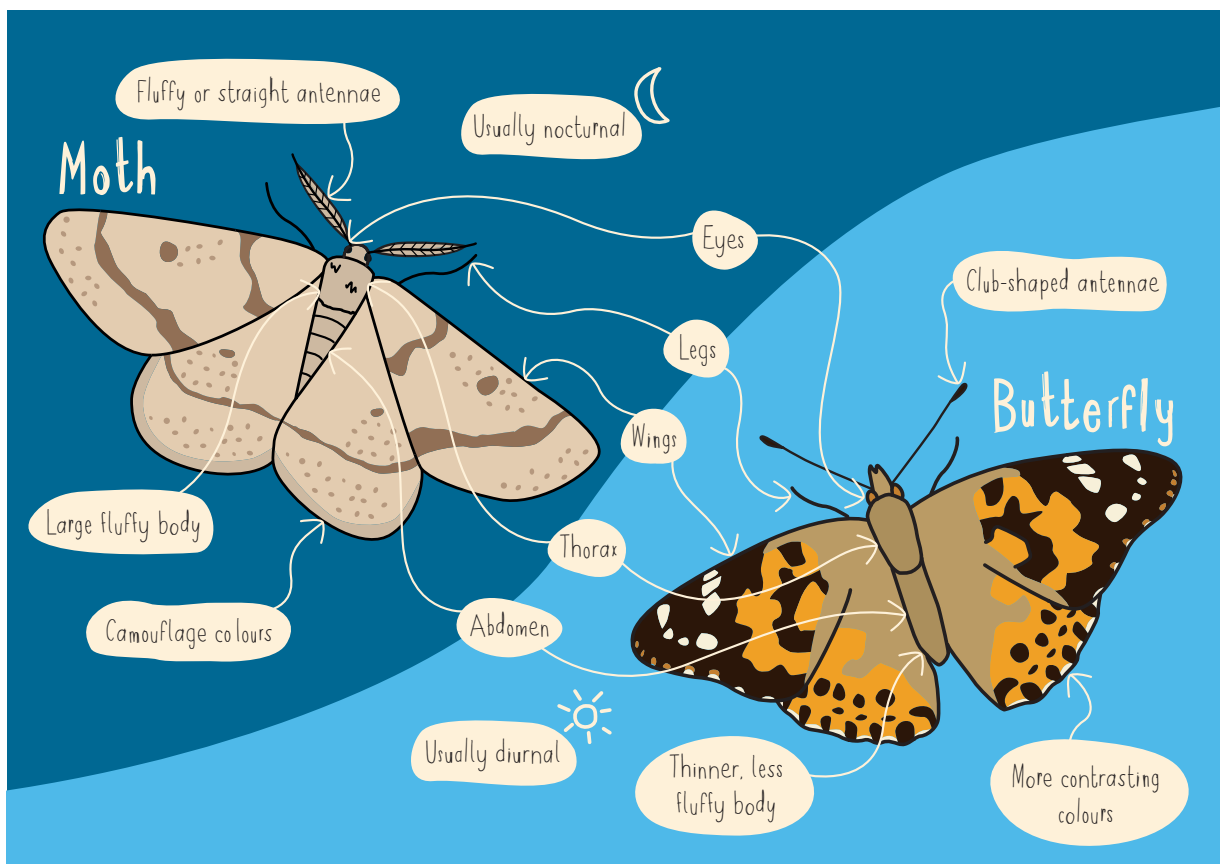


## MAGICAL MOTHS

Moths and butterflies are insects that belong to the order of animals known as Lepidoptera. Lepidoptera means 'scaly-winged' and refers to the tiny scales that cover their wings creating the patterns and colours that we see. We have around 2500 species of moths in the UK.

One way to tell the difference between butterflies and moths is to look at how they hold their wings when resting. Butterflies typically hold their wings upright while moths tend to hold their wings flat. As with all things in nature there are sometimes exceptions, but there are a few other things to look out for that might help you decide if it's a moth or a butterfly.



**How many moth species do you have in your area? Here is one method you can use to find out.**

### How to spot moths

- Hang up a white sheet on a clothes line
- Wait for it to go dark outside
- Turn off nearby lights and shine a lamp or torch on the sheet
- When you start to see some moths start recording!

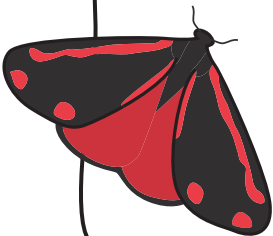
# LEARN AT CHESTERZOO

Date:

Time:

Weather:

Moth species	Number of individuals
	



Draw the identifying features of one of the moths you spotted

LEARN AT

CHESTER ZOO

MOTH GUIDE

See them during the day



Angle shades



Cinnabar



Dark arches



Dingy footman



Drinker



Elephant hawk-moth



Garden tiger



Large yellow underwing



Riband wave



White ermine